

Academic Standards, Curriculum, and Assessments

Northland Pines School District





**The Northland Pines community
guarantees rigor, relevance, and
relationships to prepare all
learners for life.**

A silhouette of a graduate wearing a cap and gown, standing in the center. Behind it, several other graduates in caps and gowns are visible, some holding diplomas, creating a sense of a graduation ceremony.

ALL staff BELIEVE in ALL students



Northland Pines

COLLECTIVE COMMITMENTS

RIGOR

- We are collectively responsible for ensuring ALL students are proficient in district promise standards.
- We will work together as collaborative teams to hold each other accountable for STAFF and STUDENT learning.
- We will proactively plan for learner variability to meet the needs of all students within the universal lesson.

RELEVANCE

- We will design learning experiences to leverage the unique strengths and interests of the students in our classroom.
- We will facilitate real-world, hands-on and authentic learning opportunities to increase student engagement.
- We will align policy and funding to these Collective Commitments.

RELATIONSHIPS

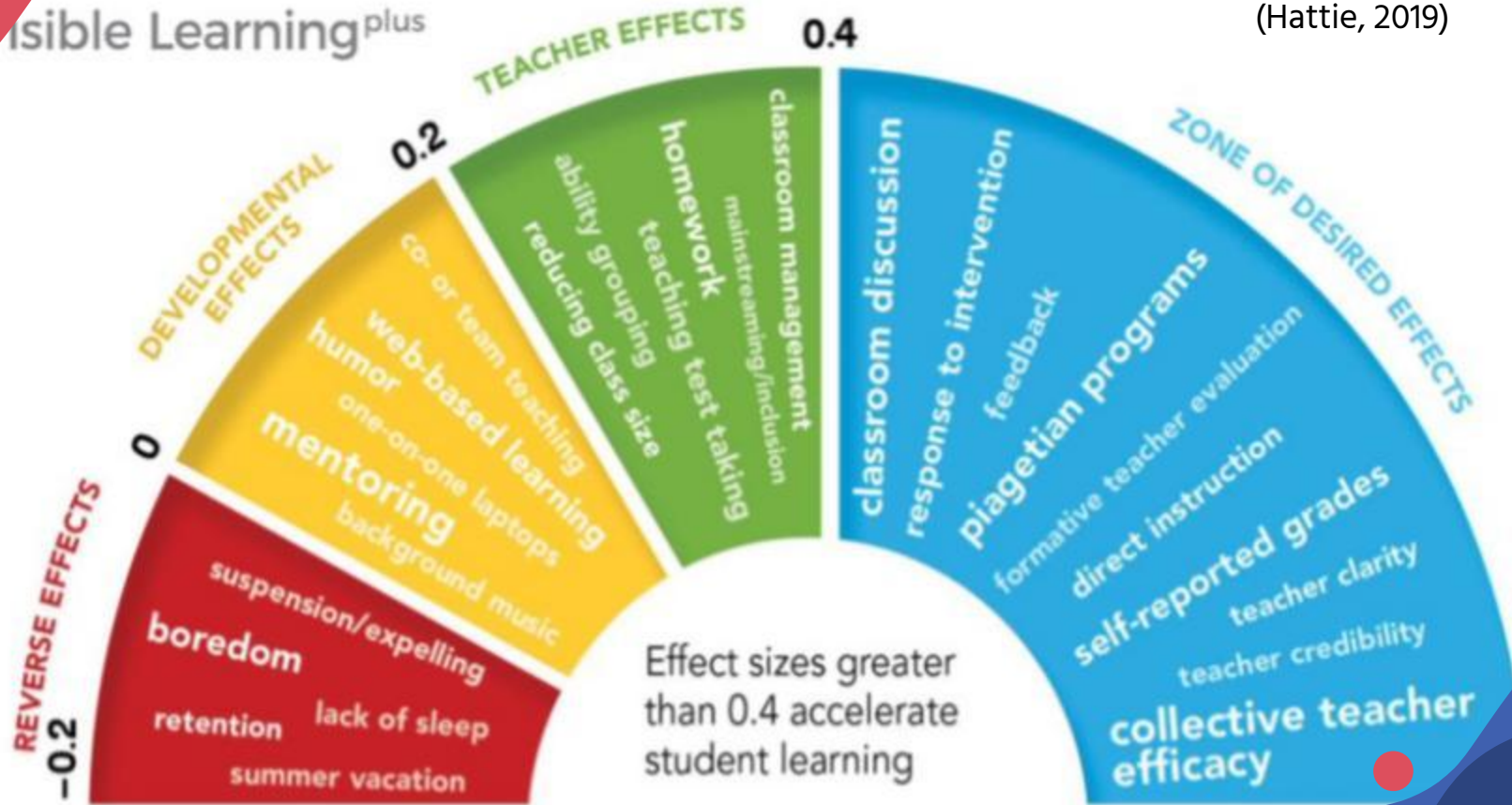
- HOW we teach is equally as important as WHAT we teach.
- We recognize that what we know and believe about our students informs our expectations, reactions and attitudes about those students.
- We will foster a safe and positive school culture through collaboration and relationships.



What is a Professional Learning Community and why is it important?

Visible Learning
Barometer of Influence
Infographic
(Hattie, 2019)

Visible Learning^{plus}



Effect sizes greater than 0.4 accelerate student learning

1
What do we want our students to know?

2
How will we know if they know it?

Professional Learning Community

4
How will we challenge students who already know it?

3
How will we support students who don't know it?

Wisconsin State Standards

What are Wisconsin Academic Standards?

The standards specify what students should know and be able to do in Wisconsin classrooms. They are a goal for teaching and learning.

Why are standards important?

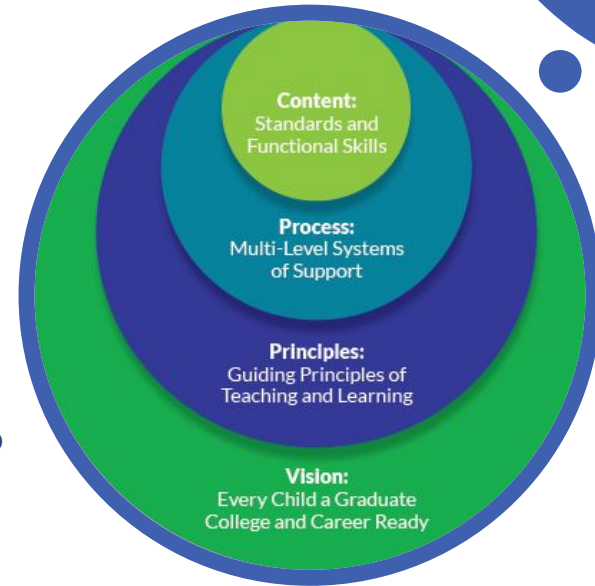
All students have equal access to high quality education. In Wisconsin, all state standards serve as a model. Locally, school boards adopt academic standards in each subject area to best serve their local community.

What informs the implementation of standards?

Wisconsin has Guiding Principles to inform the design of all standards.

Standards Review Process

DPI sends out a notice of intent followed by a public comment period. The State Superintendent authorizes revisions. Writing committees of educators are formed to revise and present to the public and Legislature.



Guaranteed and Viable Curriculum

Guaranteed and Viable Curriculum

Curriculum that ensures all students have access to high quality content, knowledge, and skills within a specific time frame. (Marzano, 2016), (ASCD Marzano Interview, 2001)

Promise Standards

Prioritized standards that are most important for students to learn.

Essential Learning Targets

Short term student learning goals that make up a promise standard.

Unit Plans

An extensive plan that arranges promise standards and essential learning targets systematically over a longer period of time, such as a month or six weeks.





1

What do we want our students to know?

2

How will we know if they know it?

Professional Learning Community

4

How will we challenge students who already know it?

3

How will we support students who don't know it?

Types of Assessments



Formative

Assessment for Learning



Summative

Assessment of Learning



State Testing

Required testing for school, district, and state accountability.

Formative Assessments

Formative assessments occurs during the learning process. The information gained drives instruction. Feedback is given to the student and some to parents.

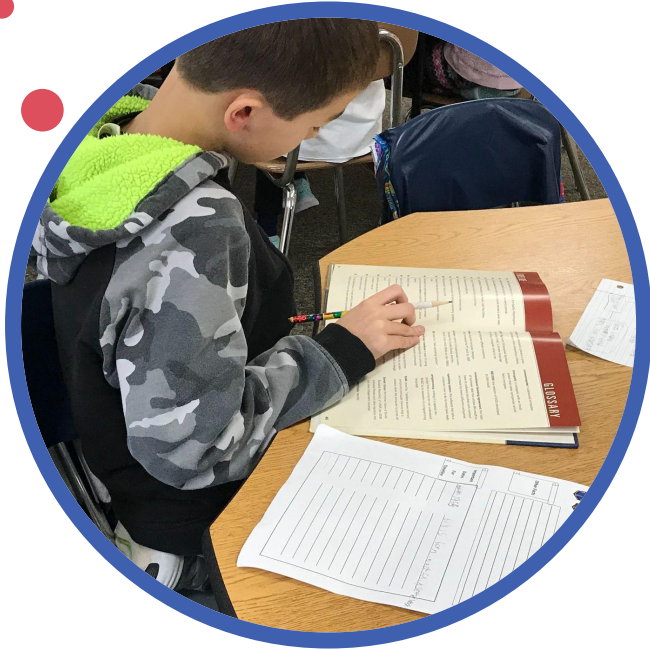
- Teacher Observation
- Exit Tickets
- Quizzes and assignments
- Interview
- STAR (universal screener, dyslexia screener)



Summative Assessments

Summative assessments evaluate student learning at the end of a unit. It is a final evaluation of learning.

- Projects
- Research Papers
- Tests
- Speeches/Presentation



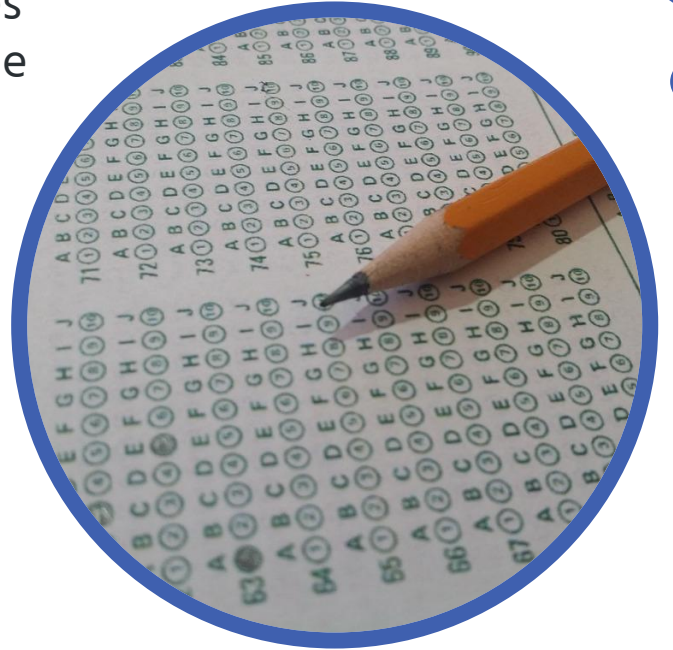
State Testing and Other Assessments

The Every Student Succeeds Act (ESSA) requires all states to test all students in English Language Arts (ELA), math, science, and social studies. Student performance on these assessments is reported in proficiency categories.

- Forward Exam (Grades 3-8)
- Pre ACT Secure (Grades 9-10)
- ACT with Writing (Grade 11)

Other Assessments

- ASVAB
- Accuplacer
- Portfolio & Interviews



Northland Pines Report Cards

Academic Performance Level for *Academic Rubric

Exceeding Benchmark	Progressing Towards Benchmark	Approaching Benchmark	Below Benchmark
3	2	1	0

Academic Performance Level for *BEHAVIOR RUBRIC - ELEMENTARY

Usually	Improvement Needed
U	I

LANGUAGE ARTS

	Term		
	T1	T2	T3
Strategies			
Accuracy & expression			
Content genres and text			
Oral communication			
Writing			
Language			
Grammar			

MATHEMATICS

Multiplies multi-digit multiplication problems			
Solves long division problems			
Applies fraction concepts			
Understands decimal notation			
DATA			
Graphs and interprets data			
MEASUREMENT			
Uses appropriate techniques, tools, units, and formulas for measurement			
PATTERNS, FUNCTIONS, & ALGEBRA			
Extends & describes patterns & recognizes & solves number sentences			
Applies problem solving strategies			

SCIENCE

LIFE SCIENCE			
Plants			
Animals			
PHYSICAL SCIENCE			
Energy			
Waves			
Patterns			

Communication to Parents

- Elementary-
 - Standards Based Grading and Comments
 - Learning Behavior
- 7-12 MS/HS-
 - Grading by Letter System
 - Character Grades and Comments

①
What do we want our students to know?

②
How will we know if they know it?

Professional Learning Community

④
How will we challenge students who already know it?

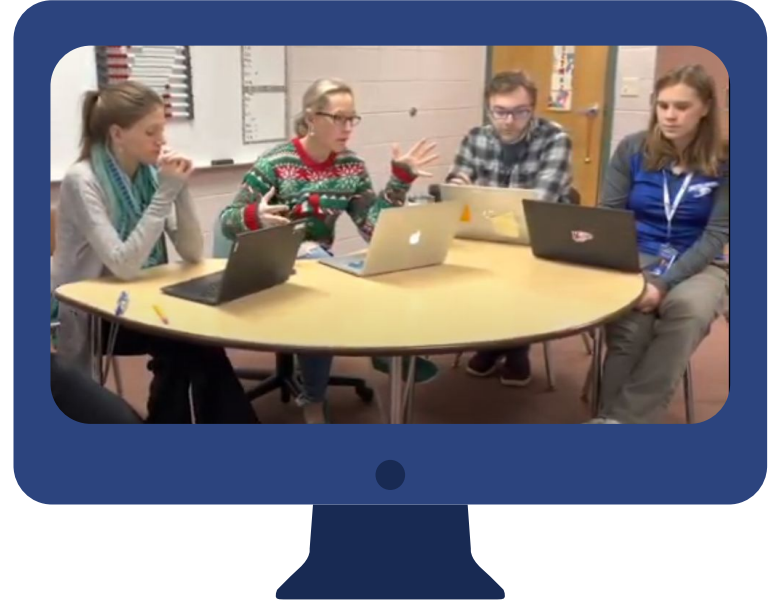
③
How will we support students who don't know it?



Collaborative Team Meetings

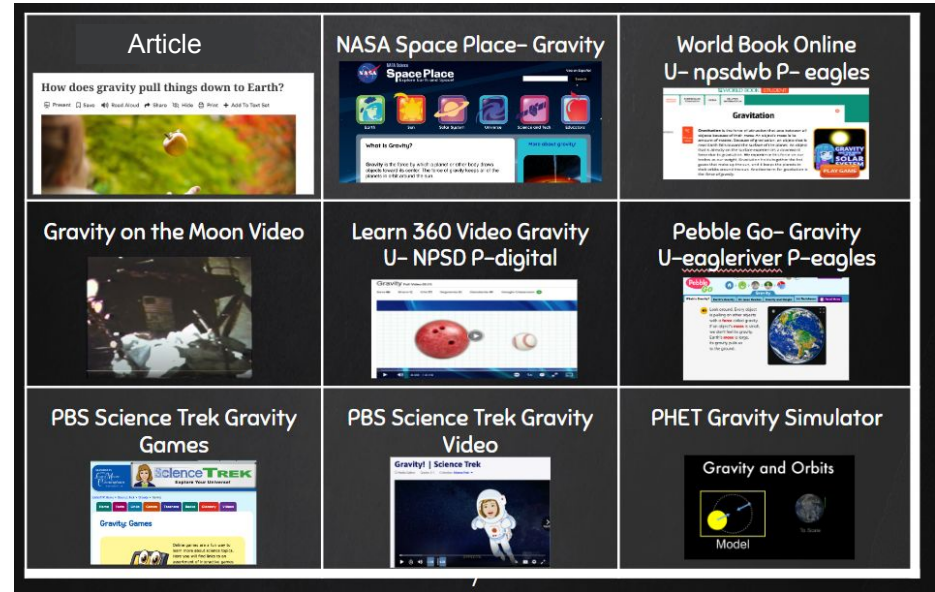
“The most valuable resource that all teachers have is each other. Without collaboration our growth is limited to our own perspectives.”

-Robert John Meehan



Universal Design for Learning (UDL)

Universal Design for Learning is a teaching framework that helps create expert learners by providing options and accommodations to support the learning process for all learners.



Our Evolving Reality

- In 2022, 75% of employers reported that they cannot find talent with the required combination of technical and interpersonal skills - a 16-year high
- Top five in-demand skills
 - Reliability and self-discipline
 - Resilience and adaptability
 - Reasoning and problem-solving
 - Creativity and originality
 - Critical thinking and analysis
 - (Manpower, 2022)

“The most successful workers share a critical skill - the ability and desire to acquire more skills.”

State Report Card vs. Local Report Card



State Report Card

Local Report Card - activity

MAR

7

SCHOOL FINANCE & QUESTIONS AND ANSWER

Want to know more about school finance and the state budget as it relates to Northland Pines? This is also a chance for parents and the community to have a discussion with District Administrator Scott Foster on other topics.

NPMS/HS Auditorium **AUDIENCE: Parents, Community and Staff** 6:30pm

APR

10

ACADEMIC STANDARDS, CURRICULUM & ASSESSMENT

What do these educational terms mean and how are they connected? This is also a chance for parents and the community to ask questions and gain understanding of the Northland Pines School District's promise standards, curriculum and instructional practices.

St. Germain Elementary **AUDIENCE: Parents, Community and Staff** 6:30pm

All Staff Believe in All Students!



Thank you!

Any questions?

Scott Foster
District Administrator
sfoster@npsd.k12.wi.us

Gretchen Smart-Hall
Director of Teaching and Learning
gsmarthall@npsd.k12.wi.us

#PinesPride
CREDITS: This presentation template was created
by **Slidesgo**, including icons by **Flaticon**,
infographics & images by **Freepik**

